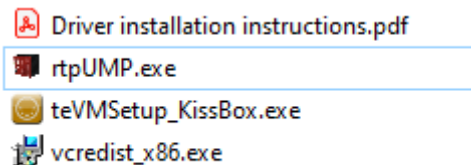




## Installation and setup instructions for rtpUMP Windows MIDI Driver

### Step 1 - Download required files

Download from KissBox website the driver installation package. The package is a zip file which contains the following files :



Open the zip file and extract the three file in a convenient location on your system. The exact location of these files does not matter.

### Step 2 – Uninstall previous RTP-MIDI drivers

It is highly recommended that all other RTP-MIDI drivers based on Tobias Erichsen Virtual MIDI ports are removed from your system. This include the following products :

- Older KissBox RTP-MIDI driver
- Tobias Erichsen's rtpMIDI application
- Tobias Erichsen's loopMIDI application

Ports created by these applications may conflict with ports created by rtpUMP.

If you want to keep these applications on your system, make sure that there is no MIDI port with a same name that the ports created within rtpUMP driver. If two different applications are using the same names for their ports, this will lead to instability and possible crashes.

### Step 3 – Install KissBox hardware driver

Double click on teVMSetup\_KissBox.exe to launch the installer



Simply follow instructions from the installer (you need to have administrator rights to install the driver), as there is no specific parameter to define.

### Step 4 – Copy and test rtpUMP application

The rtpUMP application forms the user interface of the RTP-MIDI driver. This application can be copied anywhere on your system, it does not need to reside in the Program Files folder of your

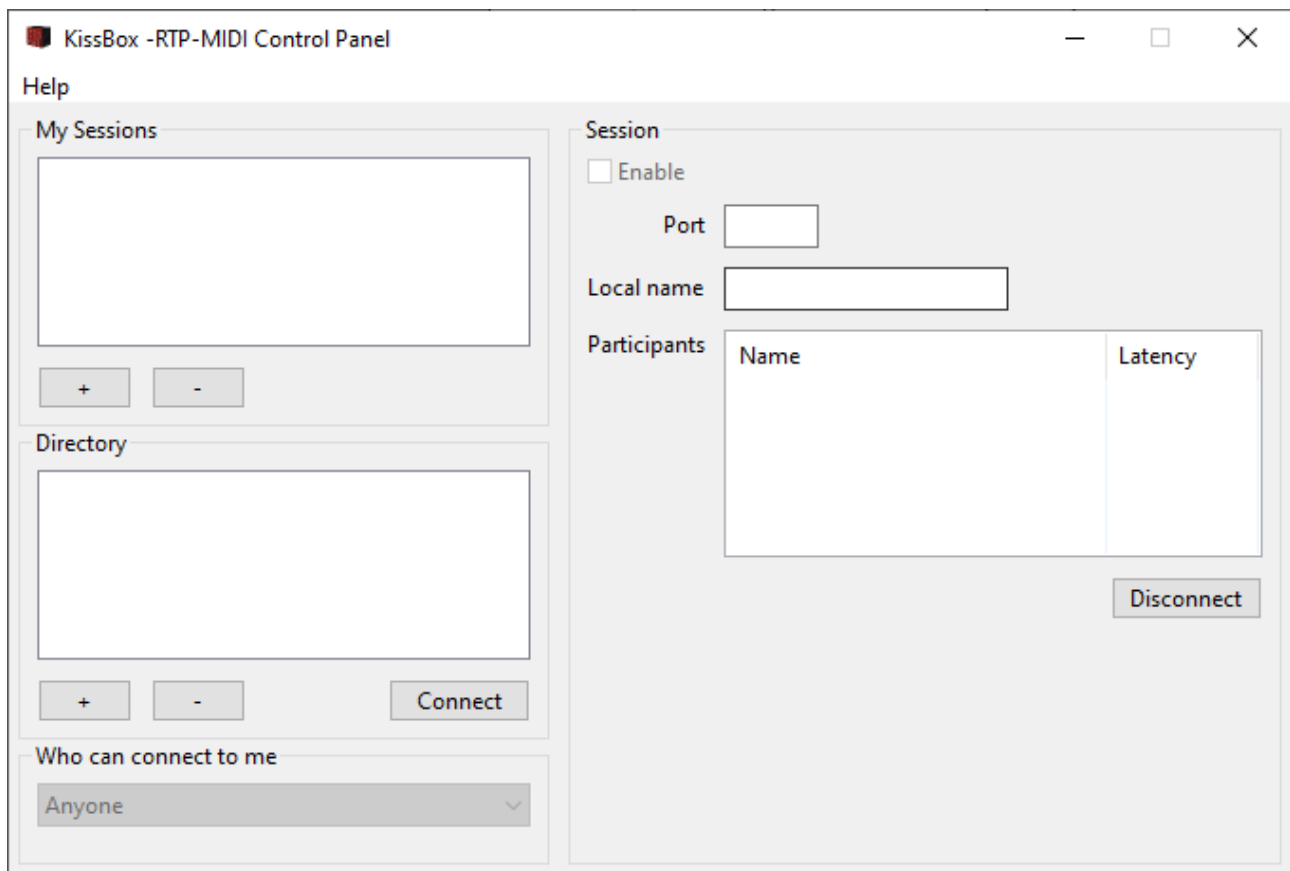
Windows system.

We recommend to copy the application in a dedicated folder, to make it easier to find.

Once the application is copied in its folder, we recommend that you try to launch it for the first time.

If the application does not start and reports missing VC++ runtime libraries, you will need to launch the program called « vcredist\_x86.exe » located in the installation folder (see step 1), in order to install the missing system libraries.

Once the VC runtime is installed, you should be able to start rtpUMP without problems and see the following window (it is normal that the window is empty when the program starts for the first time)



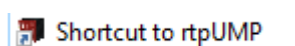
### How to launch automatically RTP-MIDI driver when Windows starts ?

By default, rtpUMP does not start automatically when Windows start. This avoids error to be displayed when rtpUMP is started while the remote RTP-MIDI devices are not connected or not powered.

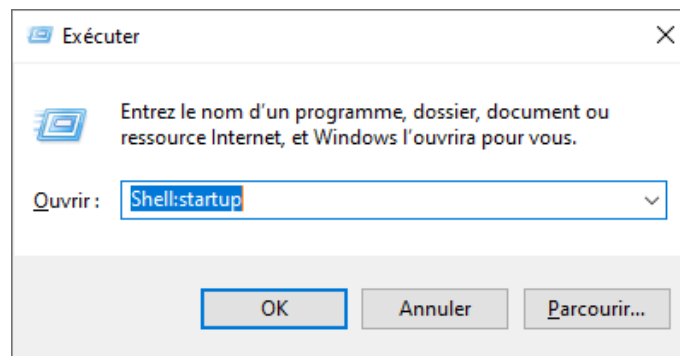
However, it is possible to launch automatically rtpUMP when Windows starts. This will open automatically all sessions with remote RTP-MIDI devices.

In order to start automatically rtpUMP, follow these steps :

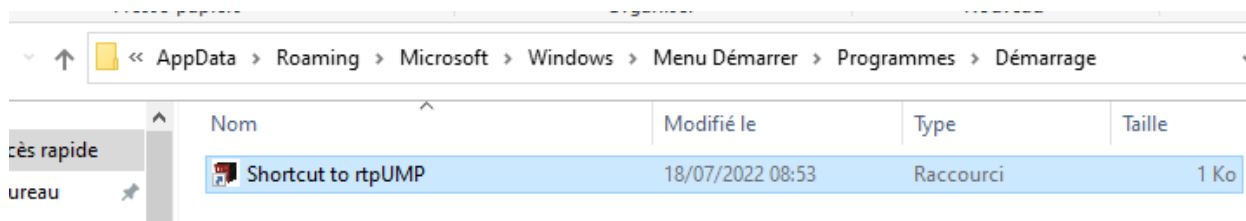
- Open the folder in which rtpUMP application is stored (see step 4)
- Right click on rtpUMP icon and choose « Create shortcut ». This will add a shortcut link in the folder



- Press Windows key along with « R » key to open the « Run » window
- Enter the following command in the window which opens
  - Shell:startup



- Click on OK : this will open the Startup window
- Drag and drop the shortcut you have created previously into the Startup window



Once the computer is restarted, the rtpUMP application will launch automatically using the last configuration created.